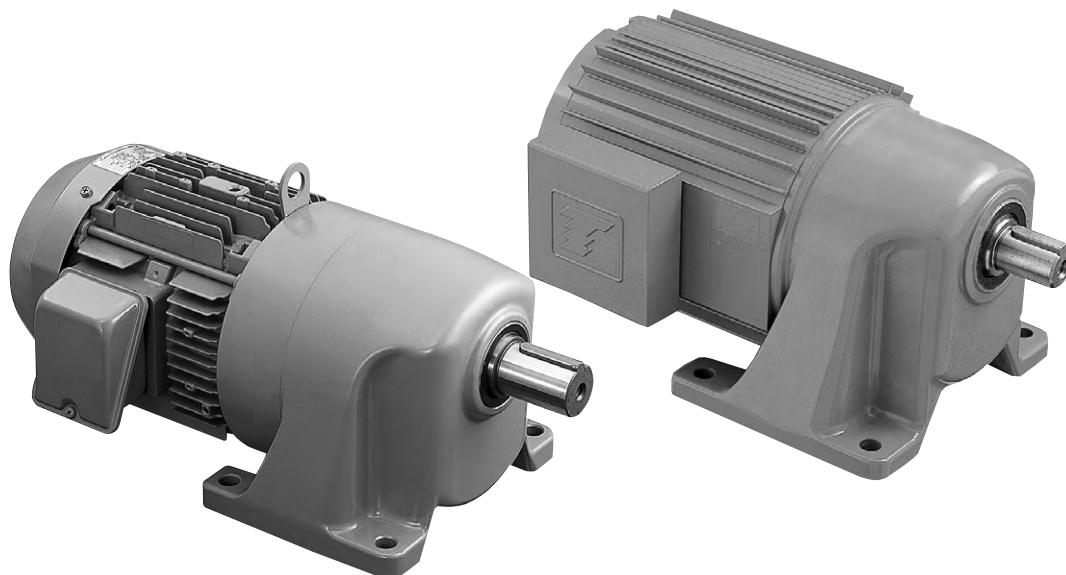


Gear Motor TA Series Features

Gear Motor TA Series Features

Helical-Gear Inline Types - The Standard for Reducers



Compact!

Three-phase 0.1 kW to 5.5 kW and single-phase 100 W and 200 W models provide many variations!

1

Low Noise & Long Life

These low-noise and long-life reducers are based on the silent design and processing technology of the Gear Motor T Series.

2

Small Size & Light Weight

Further reduction in size and weight has been realized through the adoption of motors made with aluminum frames.

3

Environmental Friendliness

In consideration of the global environment, unleaded grease is used and, the environmentally green paint identifies this change. (Munsell 2.5G6/3)

4

Ease-of-use

A frame number is included in the model number. A tapped (screw) hole is provided in the end of the output shaft. The face mount type is standard, which allows for easy fastening with bolts from the output shaft side into screw holes in the gear case mounting face.

5

Inverter Motor Type

As option, an inverter-ready motor is connected directly. Continuous operation with 100% constant torque is possible even at low frequencies (6 Hz or more). (For 2.2 kW and 3.7 kW devices, reduced torque occurs at frequencies of 10 Hz or less.)

Quick-delivery made-to-order products

Nomenclature

■ Model number 1 (0.1kW~0.75kW)

GMTA010-38L1200

①

②

③

④

⑤

⑥

⑦

① Product series name	GMTA GRTA	Motorized type Inline reducer and adapter type
② Motor capacity (example)	010 100	Three-phase 0.1 kW Single-phase 100 W
③ Frame number (example)	38	Frame number 38 (Note 1)
④ Mounting type	L U F	Foot mount Face mount type Flange mount
⑤ Reduction ratio (example)	1200	1/1200
⑥ Specification code	No code B CB FI BE SR	Without B, CB or BE Brake type Clutch type with brake Adapter type Encoder type Shock relay type, for 0.1 and 0.2 kW only
⑦ Option code (Order of priority)	1. Z 2. W 3. V 4. V1 5. V2 6. V3 7. V4 8. N 9. H 10. Q 11. M	Inverter motor type Outdoor type 400 V class (400/400/440V 50/60/60Hz) 380V50Hz 380V60Hz 415V50Hz 460V60Hz Ready for CE labeling Hard terminal box type One-touch manual release type Manual shaft type

Supplementary code (indicated on the second line of the model number)
Supplementary codes may be combined arbitrarily.

Position of terminal box
P2 : 180° swing
Position of lead outlet of hard terminal box of outdoor type
D1 : 90° swing
D2 : 180° swing
D3 : 270° swing

Note) The standard position is opposite the load side.
For resin terminal boxes, the position of the lead outlet can be changed by changing the top cover mounting direction.

Paint color (The standard color is Munsell 2.5G6/3, in which case no code is shown.)

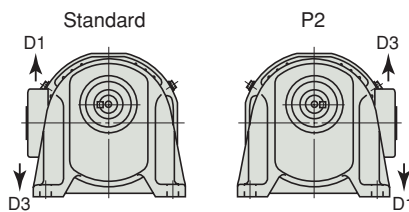
- C1 : Light silver metallic
- C2 : Ivory white (Munsell 7.5Y9/1)
- C3 : Dark silver metallic

Combination of specification codes and option codes

No brake type			Brake type			Clutch brake type	
Z	ZW	ZWV	Z	ZV	ZVH	Z	ZV
	ZV	ZVH			ZVQ	V	
	ZH				ZVM		
W	WV	WV1		ZH	ZHQ		
		WV2			ZHM		
		WV3		ZQ	ZQM		
		WV4		ZM			
V	VN		V	VN		Z	ZV
	VH			VH	VHQ	V	VH
	V1	V1H			VHM	H	
	V2	V2H		VQ	VQM		
	V3	V3H		VM			
	V4	V4H		V1	V1H		
N				V2	V2H		
H				V3	V3H		
				V4	V4H		
			N				
			H	HQ	HQM		
				HM			
			Q	QM			
			M				

Codes for terminal box positions

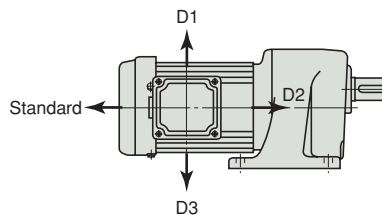
When the reduction is 1/300 or more, the terminal box is positioned differently. In this case, please contact us for details.



The directions shown by D1 and D2 in the figure above are for outdoor-type motors with hard terminal boxes. For standard motors, change the position of the lead outlet by changing the terminal box top cover mounting direction.

Codes for positions of lead outlets of outdoor-type hard terminal boxes

Positions D1, D2 and D3 are obtained by sequentially swinging the lead outlet clockwise, as viewed facing the terminal box, by 90 degrees from the standard position of the lead outlet.



Note) Combinations of brake-types and outdoor-use are made-to-order products. Please contact us for details.

(Comparison with our conventional products: examples)

	Total length	Approximate weight
0.4 kW without brake	—12mm	—2.5kg
2.2 kW without brake	—32mm	—6kg

① Quick delivery

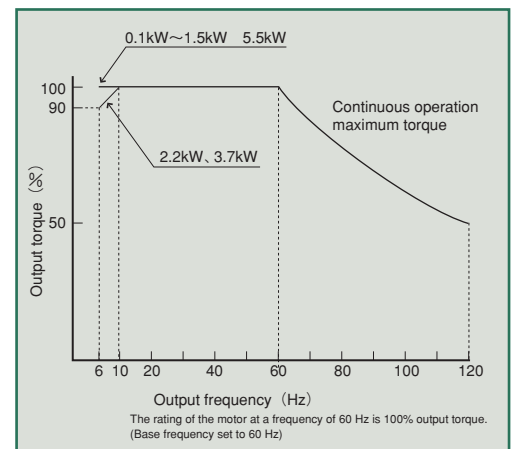
Available on short delivery

② Compact

Realization of exactly the same size as the standard product

③ Low price

For a reduction ratio of 1/30, the price of the standard product is raised by about 20%



Nomenclature

Model number 2 (1.5kW~5.5kW)

GMTA150-50L200

① ② ③ ④ ⑤ ⑥ ⑦

① Product series name	GMTA GRTA	Motorized type Inline reducer and adapter type
② Motor capacity (example)	150	Three-phase 1.5 kW
③ Frame number (example)	50	Frame number 50 (Note 1)
④ Mounting type	L U F	Foot mount Face mount type Flange mount
⑤ Reduction ratio (example)	200	1/200
⑥ Specification code	No code B CB FI BE	Without B, CB and BE Brake type Clutch type with brake Adapter type Encoder type for 1.5 and 2.2 kW only
⑦ Option code (Order of priority)	1. Z 2. W 3. V 4. V1 5. V2 6. V3 7. V4 8. Q	Inverter motor type Outdoor type 400 V class (400/400/440V 50/60/60Hz) 380V50Hz 380V60Hz (Only the 5.5 kW option is handled as a made-to-order product.) 415V50Hz 460V60Hz One-touch manual release type

Note 1) For the frame number, refer to the specification chart and outline dimensional drawing.

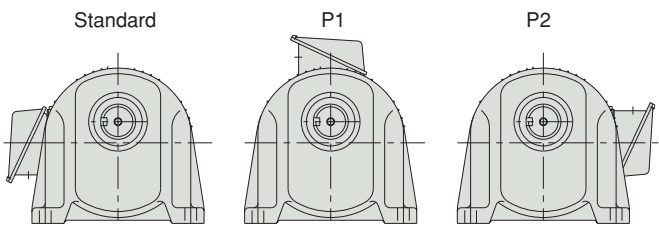
Supplementary code (indicated on the second line of the model number) Supplementary codes may be combined arbitrarily.
Position of terminal box P1 : 90° swing P2 : 180° swing Position of lead outlet of terminal box of outdoor type and standard model E1 : 90° swing E2 : 180° swing E3 : 270° swing Note) The standard position is downward.
Paint color (The standard color is Munsell 2.5G6/3, in which case no code is shown.) C1 : Light silver metallic C2 : Ivory white (Munsell 7.5Y9/1) C3 : Dark silver metallic

Combination of specification codes and option codes

Specification code: None	Specification code: B	Specification code: CB
Z ZW ZWV	Z ZV	Z ZV
ZV	ZVQ	V
W WV WV1	ZQ	
WV2	V VQ	
WV3	V1	
WV4	V2	
V V1	V3	
V2	V4	
V3	Q	
V4		
		Specification code: BE
		Z ZV
		V

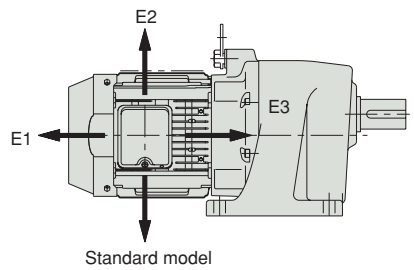
Note) Combinations of brake-types and outdoor-use are made-to-order products. Please contact us for details.

Codes for position of terminal box



Codes for position of lead outlet of terminal box of outdoor type and standard product

Positions E1, E2 and E3 are obtained by sequentially rotating the lead outlet clockwise as viewed toward the terminal box by 90 degrees from the standard position of the lead outlet.



Nomenclature